

2004-2005 SUBSCRIPTION SERIES PREVIEW

ANNIVERSARY GALA

*60 of the country's top original instruments players assemble to perform
Handel's famous orchestra suites - a NYC 'First'*

RENAISSANCE WOMEN

*By popular demand, EARLY MUSIC NEW YORK's women return to sing angelic
polyphony of the late 16th century/early baroque*

AMERICAN CHRISTMAS

*In conjunction with our latest CD release, this **brand new program** features
vivacious seasonal offerings from colonial times*

BACH & VIVALDI

*Frederick Renz salutes the greatest masters of the high baroque, conducting
two full orchestra events in a **new East Side location***

EARLY MUSIC FOUNDATION

Frederick Renz, Director

NEWSLETTER * SUMMER 2004

OUR 30TH ANNIVERSARY

This year we mark maestro Frederick Renz's 30 years of excellence in the research and performance of historical music and music drama, and his continuing commitment to the cultural life of New York City.

We invite you to join Mr. Renz and EARLY MUSIC NEW YORK (EMNY) for a celebratory, enriching season!

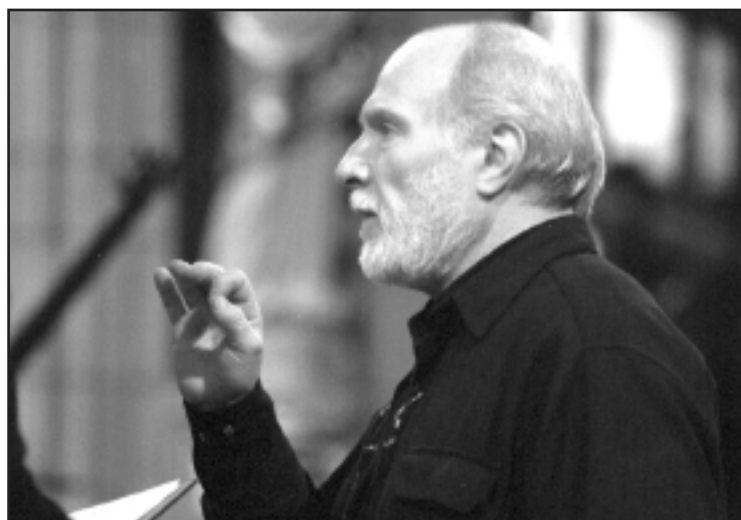


photo: Nan McVillie

RETURN OF OUR "ORIGINAL INSTRUMENTS" ORCHESTRA

Our 30th anniversary season witnesses the culmination of a process initiated three years ago: the reinstatement of EMNY's baroque/classical orchestra of original instruments. Underwritten by the National Endowment for the Arts and the Nakamichi Foundation, this endeavor was launched in the spring of 2003. A three-year project, tracing the development of the orchestra from its incipient beginnings in the early 17th century, culminating in the high baroque period, is being reflected in chronological programming and increasing numbers of performers.

To usher in the final year of this project, an expanded orchestra will open the fall season with a festive performance of G. F. Handel's famous suites "Musick for the Royal Fireworks" and "The Celebrated Water Musick" conducted by Frederick Renz. *See inside for details!* Continuing in the spring, the orchestra will perform two concerts at St. James' Church on New York City's East Side. The first will highlight the large instrumental forms of J.S. Bach. The second will feature an all-woman orchestra and chamber choir performing works by Vivaldi.

30TH ANNIVERSARY SUBSCRIPTION SEASON

EARLY MUSIC NEW YORK's programs of instrumental and vocal music of the medieval, Renaissance, and baroque eras have become an eagerly anticipated New York tradition. The season opens with a Gala featuring two of G.F. Handel's most famous suites. Our popular Christmas concerts feature a brand new program of colonial American seasonal offerings. *Details inside.*

SUBSCRIBE NOW FOR BEST SEATS AND SAVINGS.

SEE PAGE 7.

30TH ANNIVERSARY GALA

"The Celebrated Water Musick" & "Musick for the Royal Fireworks" by George Frideric Handel

SATURDAY, OCTOBER 2, 2004 AT 8:00 PM
ST. IGNATIUS LOYOLA CHURCH
PARK AVENUE & 84TH STREET

1



photo: Michael Soluri

This extraordinary performance will be the first in New York City using Handel's original festive orchestrations including 12 oboes, 6 bassoons, 9 trumpets, 9 horns, 3 pair of timpani, with a full complement of strings. This special event will be the kick off concert for the weeklong New York Early Music Celebration. *See Celebration details on page 4.*

One of Handel's most popular works, the "Music for the Royal Fireworks" was commissioned to celebrate the signing of the Treaty of Aix-la-Chapelle in 1749, marking the end of the War of the Austrian Succession. "The Celebrated Water Musick" was composed for performances on a river barge as entertainment for a "floating" royal party along the Thames for George II. It has been said that His Majesty so approved of the music that he had it repeated three times that evening—twice before and once after supper.

Reserved seating in the first rows of St. Ignatius Loyola is limited and is being made available to our subscribers, patrons, and sponsors prior to sales to the general public. *Please use the order form at the back.*

Outreach Grant

Thanks to a generous anonymous donation, a block of general admission tickets is being reserved for distribution free to

music students in New York's major conservatories and performing arts high schools with the objective of broadening their knowledge and appreciation of historical music.

You too can make a contribution!

Friends of EMF are invited to mark this gala anniversary event honoring Frederick Renz by becoming a Patron or a Sponsor. For a donation of \$1,000 Patrons will receive 8 tickets in a preferred seating section, listing in the formal invitation and program, and an autographed CD of highlights of Mr. Renz's career. Sponsors making a \$500 donation receive 4 preferred seating tickets, listings in the invitation and program, and a signed CD.

RENAISSANCE WOMEN

Emergence of Women as Composers

SATURDAY, NOVEMBER 13 AT 8:00 PM
SUNDAY, NOVEMBER 14 AT 3:00 PM
CATHEDRAL OF ST. JOHN THE DIVINE
AMSTERDAM AVENUE & 112TH STREET

2



photo: Nan Melville

Returning by popular demand, EMNY's women's ensemble moves forward in time from the medieval era to explore Renaissance polyphony, with a focus on women composers. Prior to the last third of the sixteenth century, only a handful of women composers, widely scattered chronologically and geographically, are known. Between 1566 and 1700, however, women emerged as composers and patrons; we will highlight their work.

COLONIAL CHRISTMAS

Christmastide in 18th-century America

SUNDAY, DECEMBER 12 AT 3:00 PM

SATURDAY, DECEMBER 18 AT 8:00 PM IN SYNOD HALL

SUNDAY, DECEMBER 19 AT 3:00 PM IN SYNOD HALL

SATURDAY, DECEMBER 25 (CHRISTMAS DAY) AT 3:00 PM

SATURDAY, DECEMBER 25 (CHRISTMAS DAY) AT 8:00 PM

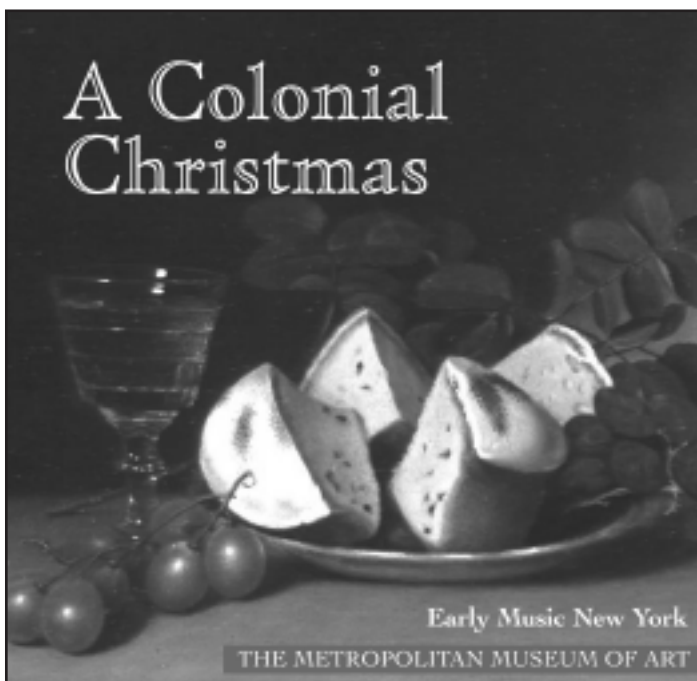
SUNDAY, DECEMBER 26 (BOXING DAY) AT 3:00 PM

SUNDAY, DECEMBER 26 (BOXING DAY) AT 8:00 PM

CATHEDRAL OF ST. JOHN THE DIVINE
AMSTERDAM AVENUE & 112TH STREET

3

EMNY'S annual Christmas season programming at the Cathedral of St. John the Divine has become an anticipated New York tradition. This year EMNY will present a totally new program: music of colonial America, featuring a stirring selection of 18th-century, New England shape-note anthems and hymns sung by our men's vocal ensemble, tunes from the 1779 fiddle-book of a colonial military captain, and popular country dance tunes played by a trio of fiddle, flute, and bass. This meticulously researched and engaging program was recently recorded on CD in collaboration with The Metropolitan Museum of Art to complement EMNY's three prior recordings of medieval, Renaissance, and baroque Christmas and seasonal repertoire.



*"Mr. Renz drew out a splendid reading.
It is doubtful others could have matched
the precision and passion obtained by Mr. Renz."*

The New York Times

BACH'S ORCHESTRA

Suites & Concerti

SATURDAY, MARCH 12, 2005 AT 8:00 PM

ST. JAMES' CHURCH

MADISON AVENUE & 71ST STREET

4

Master of many genres, J.S. Bach composed exquisite orchestral suites and concerti. Frederick Renz will be joined by NYC harpsichordist Bradley Brookshire and concertmaster Robert Mealy for Bach's most colorful and engaging music written for orchestra to commemorate this great composer in the month of his 320th birthday.

VIVALDI'S WOMEN

Orphans of the Ospedale della Pietà

SATURDAY, MAY 14, 8:00 PM

ST. JAMES' CHURCH

MADISON AVENUE & 71ST STREET

5

Among the most accomplished orchestras in Europe during the Baroque era were those comprised of young women in Venetian charitable orphanages. The most celebrated of these institutions was the Ospedale della Pietà, for whom Antonio Vivaldi served as teacher, conductor, and composer. We will recreate the orchestra of the Pietà with an all-woman ensemble, led by Julie Andrijeski, playing Vivaldi's most delightful works and in timely celebration of spring.

*"As a scholar and a performer,
Renz was obliged to make sure that his
finished product balanced
musicology, practicality and inspiration"*

The Wall Street Journal

NEW YORK EARLY MUSIC CELEBRATION



As part of its 30th anniversary year, the Early Music Foundation has expanded its services to the field (supporting historical performance in NYC) by organizing the first New York Early Music Celebration. Over 50 performing groups are scheduled from October 1-10, 2004. The goal of the Celebration is to draw increased attention to the variety and artistic and technical excellence of New York-area early music ensembles and musicians, and the historically important, non-traditional metropolitan-area architectural landmarks in which they perform. Visit the website at www.nyemc.org for complete details.

HIGHLIGHTS OF THE 2003 – 2004 SEASON

SUBSCRIPTION CONCERTS

EARLY MUSIC NEW YORK presented nine concerts directed by Frederick Renz at the Cathedral of St. John the Divine, where it has been Artist-in-Residence since its 1974 inception. In October, Renz led an ensemble of women singers and instrumentalists in music of the 14th-century masters Machaut and Landini, and in November, a men's ensemble performed works by late 16th-century polyphonists Palestrina and Lassus. EMF presented five performances of A Renaissance Christmas, including two performances on Christmas Day. Attendance was filled to capacity at every concert.

In the spring, EMNY continued its three-year project following the history of the developing baroque/classical orchestra. This project was underwritten by the National Endowment for the Arts, the Nakamichi Foundation, and a generous unrestricted three-year grant from the Horace Goldsmith Foundation. The project began with a 17th-century baroque mixed instrumental ensemble in tandem with vocal performances, as orchestras themselves evolved, increasing in numbers of players. The first season's programs, which took place in spring 2003 with performances

at St. Vincent Ferrer Church, consisted of Monteverdi and the Early 17th-century Concertato Style (1600-1650), and Purcell and the Middle Baroque (1650-1700). In spring 2004, concerts devoted to Buxtehude, Schmelzer & Bach's predecessors and Corelli, Stradella & contemporaries demonstrated the middle baroque.



Photo: Nan Melville

SATELLITE CONCERTS

The 2003-2004 season witnessed the launch of a "Satellite Series," featuring repeat performances of EMNY's New York City concerts in venues outside the city. St. Mary's in the Highland's Church in Cold Spring, the Tilles Center at C.W. Post campus of Long Island University and St. Mark's Church in Philadelphia co-presented performances of the 14th-century masters, Sirens-Harpies: Medieval Women as Performers, Subjects and Composers, and A Renaissance Christmas.

OTHER NYC PERFORMANCES

Three noted New York institutions engaged Early Music New York for special events during the season. To accompany The

Metropolitan Museum of Art's fall show of illuminated Italian manuscripts, the men's ensemble presented a program of chants and *laude* from the collection. Christmas at The Century Association was enlivened by a special performance of A Renaissance Christmas for members and guests. For the Brearley School's annual benefit, EMNY presented A Comedy of Eras, a specially-written show featuring music and theater in *commedia dell'arte* style.

ON TOUR

At the end of January, EMNY's celebrated medieval production Daniel and the Lions played return engagements in St. Louis and Kansas City to full houses and positive reviews.

"The sonorities these expert musicians produced had the kind of bite and transparency that so suited the dance origins of the music, and Renz' choice of quick tempos and conducting of larger rhythmic units allowed the music to flow naturally and without any feeling of squareness...The Fireworks were a delight."

The Washington Post

RECORDINGS

In 2003-2004, EMF's *Ex cathedra* Records produced and released a recording of women's medieval music, *Music of Medieval Love*, in association with The Metropolitan Museum of Art. The recording was made possible by generous donations from Alan Berenbaum, Patricia Eames, Gloria & Roy Matthews, Mary & Russell Seacor, Litsa D. Tsitsera, Charlene M. Weinstein, Edward B. Whitney, and an anonymous donor.

This release complements three previous recordings made for the Museum and general resale. Well over 4,000 of each title have sold in the past two years.



NEW BOARD MEMBER

We are pleased to welcome Peter deL. Swords to EMF's Board of Directors. Peter teaches non-profit law at Columbia Law

School, and was Executive Director of the Non-Profit Coordinating Committee of New York. His expertise in these areas will be invaluable, particularly, as we expand our services to the early music community.

NEW DEVELOPMENT MANAGER

Diane Ezer joined us in March as our Development Manager, replacing Chris Tokar who is being a full-time mother to her newborn son. Diane's experience includes research and grant writing for New School University and the Museum of Television & Radio. She is working diligently to expand our base of support of foundations and individuals, working in tandem with Board President Audrey Boughton to ensure the success of our fall Gala in addition to our long-range goals.

FISCAL SPONSORSHIPS

EMF acts as an IRS fiscal sponsor and provides a 501(c)(3) not-for-profit umbrella and technical assistance for other enterprises who share our mission: Parthenia, a Consort of Viols; Polyphony.com, an online early music listing resource; Metro Baroque, a chamber ensemble; Music at Brooklyn Friends, presenting a series of free concerts held at Brooklyn Friends Meeting; and Les Gouts-Reunis, specializing in French baroque repertoire.

FROM THE GENERAL MANAGER



It has been a busy and rewarding year. Frederick Renz and the musicians of Early Music New York continue to offer a uniquely broad spectrum of music at the highest levels of informed performance from medieval drama to Renaissance vocal masterpieces to baroque and classical orchestral works. At the same time, Early Music Foundation is playing an increasingly large role in New York's musical scene with its fiscal sponsorship program and support for the New York Early Music Celebration.

The historical music we all love is an important, enriching, and entertaining part of our cultural heritage. I know you join me in believing that it's a privilege and a pleasure to support the artists and institutions that bring it alive for us.

– Gene Murrow

PLACE YOURSELF IN THE BEST COMPANY

Add yourself to our Contributor's List!

Following is our roster of those who contributed to the Early Music Foundation in the last year (updated as of June 15, 2004). If you are not already on the list, please consider making a donation.

And to all of you listed here, our sincere thanks!

FRIENDS OF THE EARLY MUSIC FOUNDATION 2003-2004

(\$10,000 and over)

Horace W. Goldsmith Foundation
National Endowment of the Arts
New York State Council on the Arts
Starr Foundation

(\$2,500 - \$9,999)

Audrey Boughton
Fan Fox & Leslie R. Samuels Foundation, Inc.
Gilder Foundation, Inc.
Gladys Kriebel Delmas Foundation
Margaret Mowry Gummere
Kenneth & Rob Pierce
William D. Rondina
Ernst C. Stiefel Foundation

(\$1,000 - \$2,499)

Sally & Thatcher Brown
Molly Friedrich & Mark Carson
Janice P. Haggerty & the Merrill G. & Emta E. Hastings Foundation
Roy Matthews
Mrs. Pamela Morton
Russell & Mary Seacor
Peter deL. Swords
Dr. & Mrs. Constantine T. Tsitsera

(\$500 - \$999)

Mrs. William L. Cary
Mr. & Mrs. Stewart B. Clifford
Paul & Barbara Krieger
Priscilla Watkins & Seth Novatt
Dr. Marilyn E. Noz
Robert Rosenkranz & Alexandra Munroe
Hoyt Spelman
Edward B. Whitney

(\$250 - \$499)

Patricia Eames
Edythe Fishbeck

Robert Joseph Gunhouse & Jean Crichton
James & Maureen Houtrides
Elise Knight
Charlene M. Weinstein
Judith Anne Wink & Michael Zumoff

(\$100 - \$249)

Louise Antonou
Paul Bataille
Pat Belanoff
Alan Berenbaum
Rose M. Boxer
Bret & Elaine Charipper
Patricia Cohen
Friends of Chamber Music Kansas City
Joan Grossi
Edelgarde Gumpel
Robert V. Huber
Noel Grean Jahr MD
Lorna Kettaneh
Victoria Litz
Charles & Nancy Little
Charlotte Luer
Donald Maggin
Kathleen McNamara
Joan Ogdan
Jim & Eve O'Neill
Teresa Peterson
Dorothy & Gunther Piepke
Mary Rodgers & Henry Guettel
William Severance
Lisa M. Sherry
A. Bronson Thayer
Marian Warden
Lee Wareham
E. Lynne Van Buskirk

(up to \$99)

Marvin Alexander
Oliver Allen
Rose-Marie Boller
Josephine Burchell
Mary Jane Cory
Anne & Frank Crepeau

M. Catherine DeVido
Stephen L. Dilts, MD
Kamal Elias
Vera Julia Gordon
Robert Hazlett
Helen Hughes
Christopher Hunt
David & Joan Katz
Farhad Kazemi
Steven J. Leifer
Susan Longhito
Tracey J. Mantrone
Lorraine Matys
Michael B. Miller
Linda Nelson
N.S. Reich
Seymour & Edmee Reit
Pete Reo
Anna E. Remet
Tim Riley
Christine Rose
Stephanie Rosenbaum
Marilyn Rosenblatt
Anthony & Rosanne Scriffignano
Ms. R Sarcinella
Alan Shuback
Sherman S. Silverman
Susan Singer
Nancy M. Tooney
Harvey & Valerie Turer
Maria T. Weisbin
Karen Wilkin
Mary C. Wolf

Early Music Foundation is a not-for-profit organization under Section 501 (c) (3) of the IRS Code. Contributions to the Early Music Foundation are tax-deductible to the full extent of the law.

For further information, please contact:
Early Music Foundation, Inc.
Diane Ezer, Development Manager
1047 Amsterdam Avenue
New York, NY 10025

2005 SUBSCRIPTION SEASON

30TH ANNIVERSARY GALA (HANDEL SUITES)
ST. IGNATIUS LOYOLA CHURCH, PARK AVE & 84TH ST
SATURDAY, OCT 2, 2004 AT 8:00 PM

1

2

RENAISSANCE WOMEN
CATHEDRAL ST. JOHN THE DIVINE, AMSTERDAM AVE & 112TH ST
SATURDAY, NOV 13, 2004 AT 8:00 PM & SUNDAY, NOV 14 AT 3:00 PM

A COLONIAL CHRISTMAS

Evenings at 8 PM:

SATURDAY, DEC 18 (SYNOD HOUSE)
SATURDAY, DEC 25 (CHAPEL)
SUNDAY, DEC 26 (CHAPEL)

CATHEDRAL ST. JOHN THE DIVINE, AMSTERDAM AVE & 112TH STREET

3

Matinees at 3PM:

SUNDAY, DEC 12 (CHAPEL)
SUNDAY, DEC 19 (SYNOD HOUSE)
SATURDAY, DEC 25 (CHAPEL)
SUNDAY, DEC 26 (CHAPEL)

BACH'S ORCHESTRA
ST. JAMES' CHURCH, MADISON AVE AT 71ST ST
SATURDAY, MARCH 12, 2005 AT 8:00 PM

4

5

VIVALDI'S WOMEN
ST. JAMES' CHURCH, MADISON AVE AT 71ST ST
SATURDAY, MAY 14, 2005 AT 8:00 PM